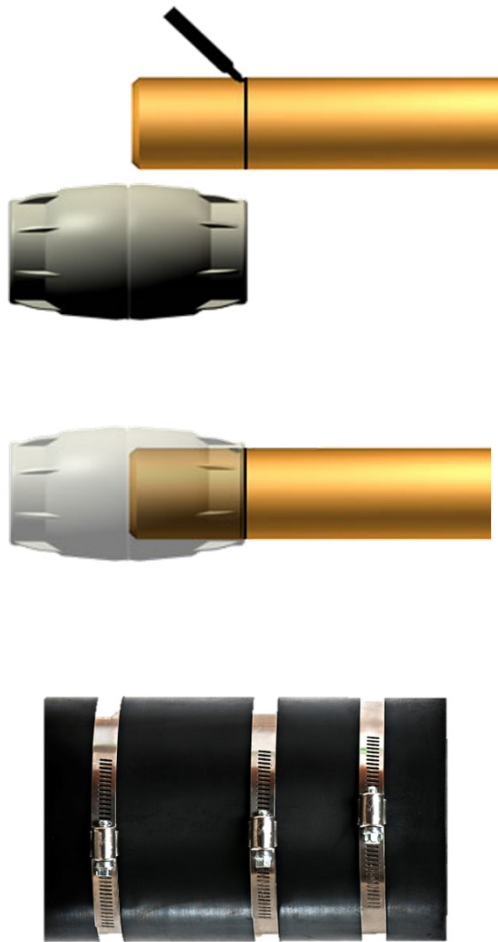




Gravenhurst Plastics Limited

FITTINGS AND ACCESSORIES

FOR High Density Polyethylene Conduit

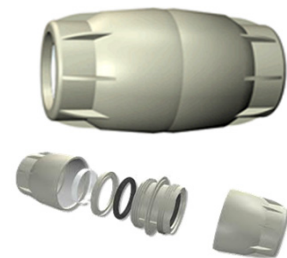


GRAVENHURST PLASTICS HAS BEEN PROUDLY SERVING THE CANADIAN ELECTRICAL, DATA AND TELECOMMUNICATION INDUSTRIES FOR MORE THAN 45 YEARS.



Gravenhurst Plastics Limited

COUPLINGS



Comfit Couplers

| Size | Length | Code | Pull Out (kN) | Jerk Force (KG) | Pcs/Box |
|--------|--------|--------|------------------|--------------------|---------|
| 3/4" | 2 3/4" | PC-075 | 1.4 | 180 | 144 |
| 1" | 3 1/2" | PC-100 | 2.2 | 200 | 70 |
| 1 1/4" | 4 1/2" | PC-125 | 3.5 | 200 | 56 |
| 1 1/2" | 5 1/2" | PC-150 | 4.5 | 200 | 36 |
| 2" | 7" | PC-200 | 7.0 | 200 | 34 |



Compression Couplers

| Size | Length | Code | Pressure Rated (PSI) | Pcs/Box |
|--------|---------|--------|-------------------------|---------|
| 1/2" | 5.187" | CC-050 | 200 | 25 |
| 3/4" | 5.437" | CC-075 | 200 | 25 |
| 1" | 5.687" | CC-100 | 200 | 12 |
| 1 1/4" | 6.250" | CC-125 | 200 | 6 |
| 1 1/2" | 6.500" | CC-150 | 200 | 10 |
| 2" | 7.125" | CC-200 | 200 | 5 |
| 2 1/2" | 8.687" | CC-250 | 200 | 3 |
| 3" | 9.500" | CC-300 | 200 | 3 |
| 4" | 11.313" | CC-400 | 200 | 3 |




c/w 8 securing nuts


2-Piece Repair Couplings


| Size | Length | Code | Pressure Rated | Pcs/Box |
|--------|--------|--------|----------------|----------|
| 3/4" | 2.500" | RC-075 | NA | As Req'd |
| 1" | 3.500" | RC-100 | NA | As Req'd |
| 1 1/4" | 4.000" | RC-125 | NA | As Req'd |
| 1 1/2" | 4.000" | RC-150 | NA | As Req'd |
| 2" | 4.000" | RC-200 | NA | As Req'd |




Gravenhurst Plastics Limited

| | Size | Code | Pcs/Box |
|--|-------------|-------------|----------------|
|  Temporary Plugs High Density Polyethylene | 1/2" | TP-050 | As Required |
| | 3/4" | TP-075 | As Required |
| | 1" | TP-100 | As Required |
| | 1 1/4" | TP-125 | As Required |
| | 1 1/2" | TP-150 | As Required |
| | 2" | TP-200 | As Required |
| | 3" | TP-300 | As Required |
| | 4" | TP-400 | As Required |


| | Size | Code | Pcs/Box |
|--|-------------|-------------|----------------|
|  Nipple Plugs | 3/4" | NC-075 | As Required |
| | 1 1/2" | NC-150 | As Required |
| | 2" | NC-200 | As Required |


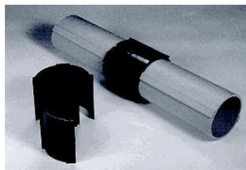
| | Size | Code | Pcs/Box |
|--|-------------|-------------|----------------|
|  PVC 90 Degree Elbows | 3/4" | RC90-075 | As Required |
| | 1" | RC90-100 | As Required |
| | 1 1/4" | RC90-125 | As Required |
| | 1 1/2" | RC90-150 | As Required |
| | 2" | RC90-200 | As Required |
| | 3" | RC90-300 | As Required |
| | 4" | RC90-400 | As Required |


| | Size | Code | Pcs/Bundle |
|--|-----------------|-------------|-------------------|
|  PVC UV sleeve for 3/4" HDPE PIPE | 1" Nominal O.D. | SL-3/4 | 20 |





Gravenhurst Plastics Limited

| | Strength | Type | Code | Length | Reels/Skid |
|--|-----------------|-------------|-------------|---------------|-------------------|
|  Polyester Flat Slick Tape Sequentially Marked | 400 pound | Detectable | PT-400-2D | 2000 Meters | As Req'd |
| | 900 pound | Detectable | PT-900-2D | 2000 Meters | As Req'd |
| | 1250 pound | Standard | PT-1250-2S | 2000 Meters | As Req'd |
| | 1800 pound | Standard | PT-1800-1S | 1000 Meters | As Req'd |
| | 1800 pound | Standard | PT-1800-2S | 2000 Meters | As Req'd |
| | 2500 pound | Standard | PT-2500-1S | 1000 Meters | As Req'd |
| | 2500 pound | Standard | PT-2500-2S | 2000 Meters | As Req'd |

| | Size | Length | Code | | Size | Pieces | Code |
|--|-------------|---------------|-------------|---|-------------|---------------|-------------|
|  Conduit Repair Pipe | 3/4" | 10' | RP-3/4 |  Couplings for Conduit Repair Pipe | 3/4" | 2 | RPC-3/4 |
| | 1" | 10' | RP-1 | | 1" | 2 | RPC-1 |
| | 1 1/4" | 10' | RP-1 1/4 | | 1 1/4" | 2 | RPC-1 1/4 |
| | 1 1/2" | 10' | RP-1 1/2 | | 1 1/2" | 2 | RPC-1 1/2 |
| | 2" | 10' | RP-2 | | 2" | 2 | RPC-2 |

| | Size | Material | Length | Units/Box |
|---|-------------|-----------------|---------------|------------------|
|  WOBBLE JOINTS - Heavy Duty EPDM c/w 4 stainless steel hose clamps | 3" | EPDM | 10" | As Required |
| | 4" | EPDM | 10" | As Required |

| | Size | Material | Fits | Code | Length | Units/Box |
|--|-------------|-----------------|-------------|-------------|---------------|------------------|
|  HDPE Sleeve couplers | 2.5" | HDPE | 2" O.D. | CC-2" | 16" | 20 |
| | 3.5" | HDPE | 3" O.D. | CC-3" | 16" | 10 |
| | 4.5" | HDPE | 4" O.D. | CC-4" | 16" | 10 |

| | Size | Code | Length |
|---|--|-------------|---------------|
|  Highway, Road and Trail Markers | 1 1/4" | RM-1-1/4 | 4 feet |
| | * bottom of marker has a 45 degree angle cut | | |